

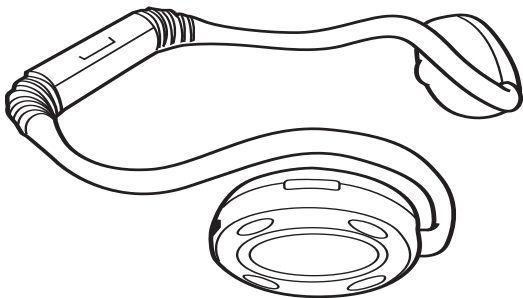
Memorex®

Is it live or is it Memorex?™

MMP8558

User's Guide

*Personal MP3/
WMA Player*



**Before operating this product,
please read these instructions completely.**

PRECAUTIONS

COPYRIGHT:

- Distributing copies of MP3 or WMA with DRM tracks without permission is a violation of international copyright laws.

SAFETY:

- Vibration experienced during walking or exercising will not affect the player. However, dropping the player or dropping a heavy object on the player may result in damage or sound distortion.
- Avoid spilling any liquid onto or into the player.
- Do not leave the player in a location near heat sources; in a location subject to direct sunlight, excessive dust, sand, moisture, rain or mechanical shock; on an unlevel surface; or in a car with the windows closed during periods of excessive heat.

ROAD SAFETY:

- Do not use headphones while driving, cycling or operating any motorized vehicle. It may create a traffic hazard and it is illegal in some areas. It can be potentially dangerous to play your headset at a high volume while walking, especially at pedestrian crossings. You should exercise extreme caution or discontinue use in potentially hazardous situations.

FCC WARNING:

- This equipment may generate or use radio frequency energy. Changes or modifications to this equipment may cause harmful interference unless the modifications are expressly approved in the instruction manual. The user could lose the authority to operate this equipment if an unauthorized change or modification is made.

FCC DECLARATION

This device complies with Part 15 of the FCC rules. Operation is subject to the following two conditions: 1) This device may not cause interference, and 2) This device must accept any interference received, including interference that may cause undesired operation.

Warning: Changes or modifications to this unit not expressly approved by the party responsible for compliance could void the user's authority to operate the equipment.

NOTE: This equipment has been tested and found to comply with the limits for a Class B digital device, pursuant to Part 15 of the FCC Rules. These limits are designed to provide reasonable protection against harmful interference in a residential installation. This equipment generates, uses and can radiate radio frequency energy and, if not installed and used in accordance with the instructions, may cause harmful interference to radio communications.

However, there is no guarantee that interference will not occur in a particular installation. If this equipment does cause harmful interference to radio or television reception, which can be determined by turning the equipment off and on, the user is encouraged to try to correct the interference by one or more of the following measures:

- Reorient or relocate the receiving antenna.
- Increase the separation between the equipment and receiver.
- Connect the equipment into an outlet on a circuit different from that to which the receiver is connected.
- Consult the dealer or an experienced radio/TV technician for help.

Shield cable must be used with this unit to ensure compliance with class B FCC limits.



Dear Customer:

Selecting fine audio equipment such as the unit you've just purchased is only the start of your musical enjoyment. Now it's time to consider how you can maximize the fun and excitement your equipment offers. This manufacturer and the Electronic Industries Association's Consumer Electronics Group want you to get the most out of your equipment by playing it at a safe level. One that lets the sound come through loud and clear without annoying blaring or distortion and, most importantly, without affecting your sensitive hearing.

Sound can be deceiving. Over time your hearing "comfort level" adapts to higher volumes of sound. So what sounds "normal" can actually be loud and harmful to your hearing. Guard against this by setting your equipment at a safe level BEFORE your hearing adapts.

To establish a safe level:

- Start your volume control at a low setting.
- Slowly increase the sound until you can hear it comfortably and clearly, and without distortion.

Once you have established a comfortable sound level:

- Set the dial and leave it there.

Taking a minute to do this now will help to prevent hearing damage or loss in the future. After all, we want you listening for a lifetime.

We Want You Listening For A Lifetime

Used wisely, your new sound equipment will provide a lifetime of fun and enjoyment. Since hearing damage from loud noise is often undetectable until it is too late, this manufacturer and the Electronic Industries Association's Consumer Electronics Group recommend you avoid prolonged exposure to excessive noise. This list of sound levels is included for your protection.

Decibel

Level

Example

30	Quiet library, soft whispers
40	Living room, refrigerator, bedroom away from traffic
50	Light traffic, normal conversation, quiet office
60	Air conditioner at 20 feet, sewing machine
70	Vacuum cleaner, hair dryer, noisy restaurant
80	Average city traffic, garbage disposals, alarm clock at two feet

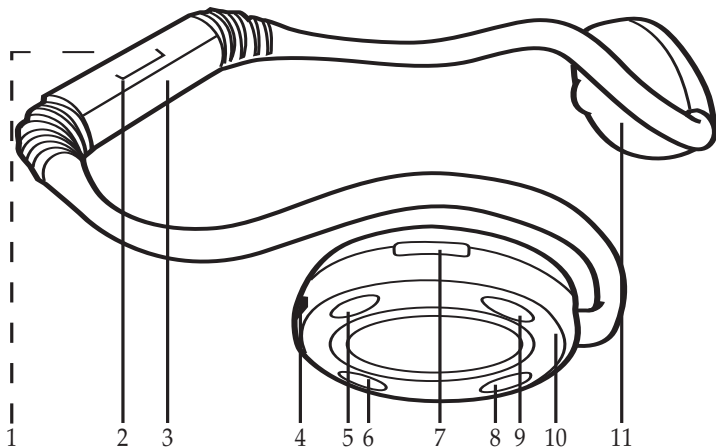
THE FOLLOWING NOISES CAN BE DANGEROUS UNDER CONSTANT EXPOSURE:

90	Subway, motorcycle, truck traffic, lawn mower
100	Garbage truck, chain saw, pneumatic drill
120	Rock band concert in front of speakers, thunderclap
140	Gunshot blast, jet engine
180	Rocket launching pad

Information courtesy of the Deafness Research Foundation.



LOCATION OF CONTROLS



- | | |
|-------------------------------|--------------------------|
| 1. Function Indicator | 7. VOLUME +/- Buttons |
| 2. PRESS TO OPEN Area | 8. Skip/Search ►► Button |
| 3. Battery Compartment | 9. Stop/Power Off Button |
| 4. USB Jack | 10. Right Earpiece |
| 5. Play/Pause/Power On Button | 11. Left Earpiece |
| 6. Skip/Search ◀◀ Button | |

BATTERY INSTALLATION

When the battery is too low to play the files or the player cannot be turned on, replace the battery as follows:

1. Open the battery cover by pressing the PRESS TO OPEN area, then lift the rear cover up to remove it as shown in figure 1.
2. Insert one (1) “AAA” battery as shown in figure 2. An alkaline battery is recommended for the longest playing time.

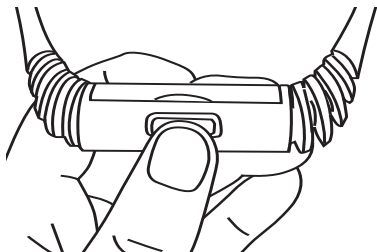


Figure 1

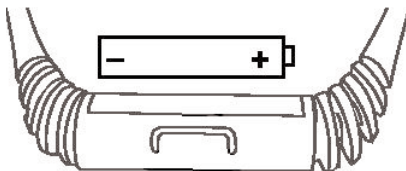


Figure 2

3. Put the battery cover back on until it snaps in place.

BATTERY PRECAUTIONS

Follow these precautions when using a battery in this device:

1. Use only the size and type of battery specified.
2. Be sure to follow the correct polarity when installing the battery as indicated. Reversed batteries may cause damage to the device.
3. If the device is not to be used for a long period of time, remove the battery to prevent damage or injury from possible battery leakage.
4. Do not try to recharge batteries not intended to be recharged; they can overheat and rupture. (Follow battery manufacturer's directions.)

DOWNLOADING AND TRANSFERRING FILES

TO INSTALL THE "DIGITAL AUDIO PLAYER" CD SOFTWARE

ONLY CONNECT THE UNIT USING THE SUPPLIED USB CABLE, OTHERWISE DAMAGE MAY OCCUR.

For Windows ME, Windows2000 or Windows XP:

Windows will automatically detect the audio player without installing the CD software when the USB cable is connected and the LED will light red.

For Macintosh OSX:

Macintosh OSX will automatically detect the audio player without installing the CD software and the LED will light red. Do not install the software when using a Macintosh.

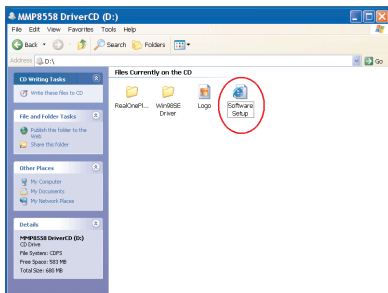
For Windows98SE:

The USB mass storage function will not be activated without driver installation. To activate the USB mass storage function, please use the installation CD-Rom to install the driver.

For Windows 98SE, if you are connecting your player to your computer for the first time, please follow these instructions:

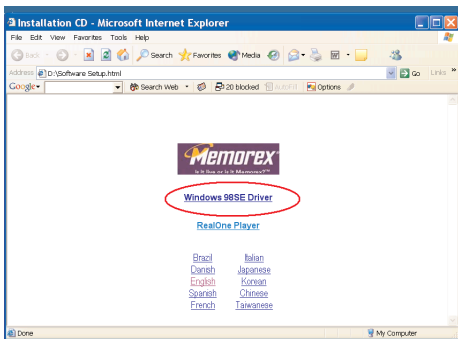
Procedure to Install Player Driver

1. Insert the CD-Rom into the CD Drive; open the CD Drive window to view files using Windows Explorer.
2. Double click the "Software Setup.html" icon.

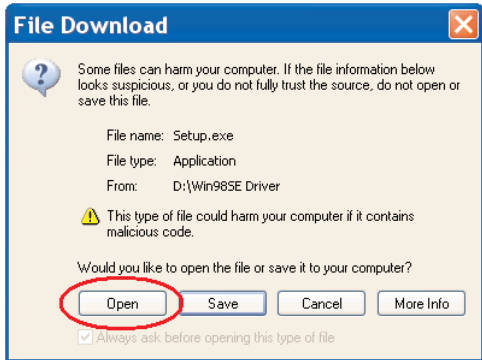


WINDOWS 98 DRIVER INSTALLATION (CONTINUED)

3. Then click “Windows 98SE Driver” in the folder.

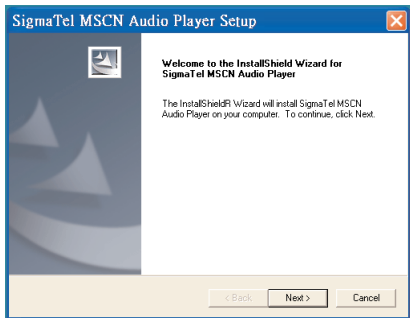


4. Then click the “Open” box to run the installer.



WINDOWS 98 DRIVER INSTALLATION (CONTINUED)

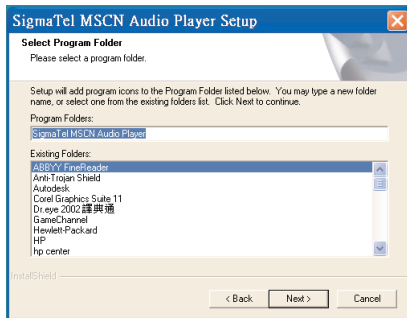
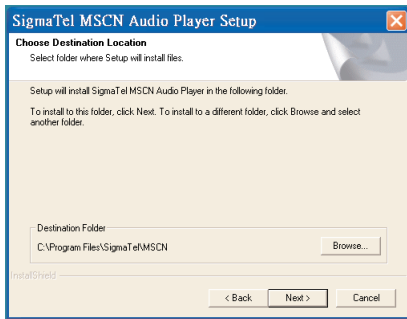
5. Follow the on-screen instructions to install the software.



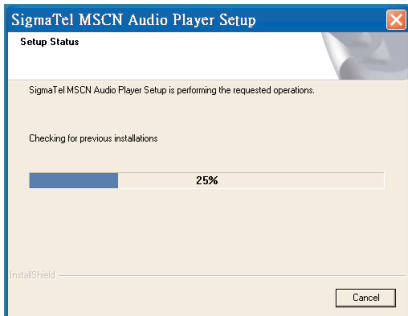
WINDOWS 98 DRIVER INSTALLATION (CONTINUED)

6. Install the software under the directory as prompted.

Warning: DO NOT change the installation path. Otherwise, the driver may not run properly.



WINDOWS 98 DRIVER INSTALLATION (CONTINUED)



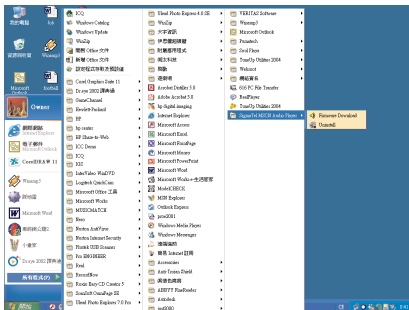
7. After successfully installing the driver software, click "Finish" to finish the installation and exit the Setup menu.



NOTE: When installation is finished, you will need to restart your computer.

WINDOWS 98 DRIVER INSTALLATION (CONTINUED)

8. When the installation has completed, the new program, SigmaTel MSCN Audio Player, will be added to the PROGRAM menu on your computer.



NOTE: Do not directly open the “Firmware Downloading” program to upgrade the player. You should visit our Web site at www.memorexelectronics.com to check if there is new firmware available. Follow the instructions on the Web site.

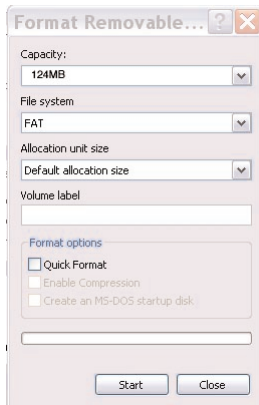
FORMATTING THE PLAYER

Formatting the Player

1. Use the USB cable to connect the player and the computer. Press the Play/Pause/Power On button to turn the unit on.
2. When the computer recognizes the player, the Function indicator will light red. Double click on My Computer, right click the "Removable Disk" and left click on "Format".
3. At the "Format" window, select "FAT" from the file system pull down menu, then click start to format the unit (see figure to the right).

NOTE: Make sure you have selected the "FAT" at the file system pull down menu, otherwise after formatting, the player will not work properly.

4. Click OK to confirm and the player will start to format.
5. When finished, click "Close" to close the Format window.



DOWNLOADING AND TRANSFERRING FILES

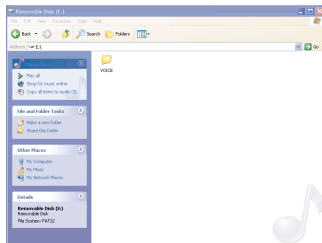
TRANSFERRING FILES

You can download digital music files from the internet or use encoding software to convert music that you have on an audio CD into MP3 or WMA format. Once these files are stored on your computer you can easily copy them to your player.

Connect the computer to your player using the supplied USB cable.

Press the Play/Pause/Power On Button to turn the unit on, the Function indicator will light red.

A "Removable Disk" window will automatically pop up on your computer screen. To add more files and songs to your player simply drag and drop MP3 or WMA files from anywhere on your computer into the "Removable Disk" window. During file transmittal, the Function indicator will flash red.



IMPORTANT NOTE: The WMA file with DRM will not playback if you directly drag and drop it into the "Removable Disk" window. See pages 19-21 for downloading WMA files with DRM from the computer to your player.

When you are finished, see the Safely Remove Hardware procedure on the next page before disconnecting the player.

DOWNLOADING AND TRANSFERRING FILES (CONTINUED)

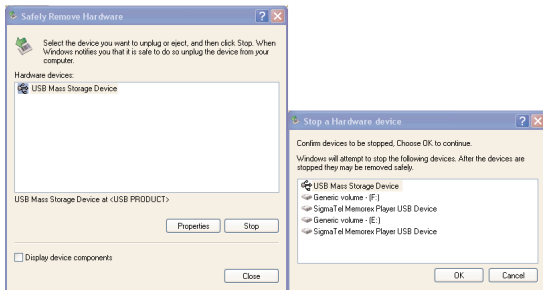
SAFELY REMOVING YOUR PLAYER FROM THE COMPUTER

NOTE: To avoid damage to your player or data loss, always follow the procedure listed below before disconnecting the USB cable from your computer or disconnecting the player from the USB cable.

Using your mouse, double click the "Safely Remove Hardware" icon on the task bar.



From the "Safely Remove Hardware" window, select "USB Mass Storage Device" and click the "Stop" button. The "Stop a Hardware Device" window will pop up as shown: Click "OK". When the "Safe to Remove Hardware" window is displayed, you may remove the player from the USB cable or remove the USB cable from the computer.

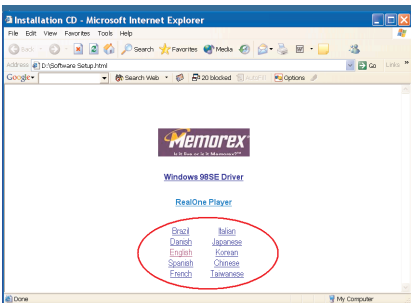
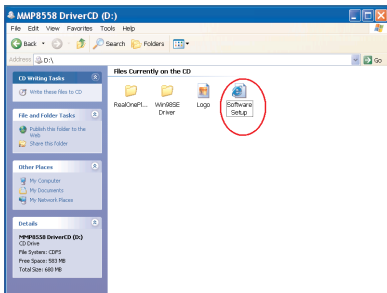


NOTE: If the "Safely Remove Hardware" icon is not displayed on the task bar, please double click on My Computer. Right click on "Removable Disk" and left click on "eject". Then it is safe to remove the player from the computer.

DOWNLOADING AND TRANSFERRING FILES (CONTINUED)

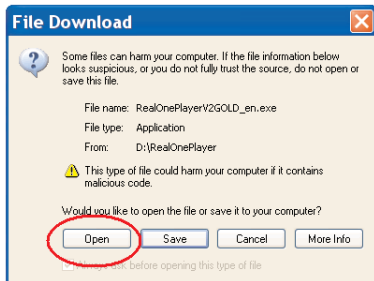
REALONE PLAYER INSTALLATION (PC ONLY):

1. Insert the CD-ROM into the CD Drive, open the CD Drive window to view the files using Windows Explorer.
2. Double click the "Software Setup.html" icon.
3. Then click the desired language for the RealOne player.



DOWNLOADING AND TRANSFERRING FILES (CONTINUED)

4. Then click the "Open" box to run the installer.



NOTE:

- Before saving tracks to your RealOne player, open the RealOne player and click on "CD" at the bottom of the screen. Next, click on Preferences; select MP3 audio as the format, then click "OK". This will ensure the music is recorded in the correct format for the player to read.

DOWNLOADING AND TRANSFERRING FILES (CONTINUED)

INSTRUCTIONS FOR DOWNLOADING SONGS FROM THE COMPUTER USING REALONE SOFTWARE

- 1 Install the RealOne Software, version 2.0.
- 2 When the unit is on, connect the USB cable to the MP3 Player and the USB port of the computer.
- 3 To make sure the computer recognizes the MP3 player, double click on MY COMPUTER, and check for a drive called Removable Disk. Double click on Removable Disk, and make sure the Capacity is equal to 124MB, and minimize this window.
- 4 Insert a Music CD into the CD-Rom drive of your computer, and open RealOne Media Browser. Next, click on the CD icon on the bottom tool bar of the Media Browser. Click on preferences, choose MP3 Audio, and 96Kbps Stereo and click OK.
- 5 Click the "Save Tracks" icon on the bottom menu bar to open the "Select Tracks" dialog box. Select the desired tracks on the CD and click "OK" to save the tracks into My Library; "Pending" will appear at the end of the tracks' name and "Saved" will be shown after the track's name when finished saving. Choose "My Library" from the Menu Bar and double click on the yellow folder (show organizer). Double click on the "All Media" (view your entire library) to view a list of the saved songs.
- 6 Click on the yellow plus (+) sign on the left bottom tool bar and click on "Add File" to add the tracks to the MP3 player. Once you click on Add File, another dialog box will appear on your screen. Double click on the name of the CD that you want to load into your MP3 player and highlight all of the songs. Right click on the songs and select "Send To", then click on the MP3 player. If you do not see your MP3 player, click on Copy to copy the songs.
- 7 Open the Removable Disk window, right click to open another dialog box and click on paste to load your songs into your MP3 player.
- 8 Once the files are finished loading into the player, disconnect the USB cable, insert headphones and listen to your music.

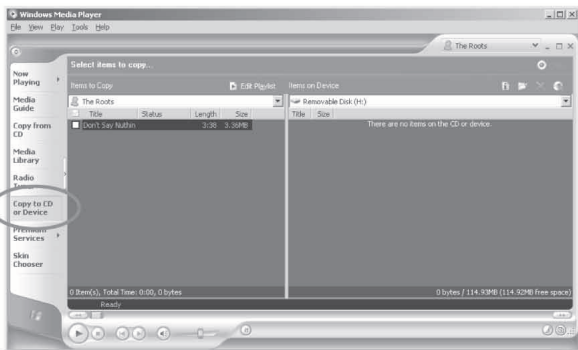
IMPORTANT NOTE: WMA DRM files will not play on the player if you use this method for transferring files. See pages 19-21 for downloading WMA files with DRM from the computer to your player.

DOWNLOADING AND TRANSFERRING FILES (CONTINUED)

Instructions for downloading WMA files with DRM from the computer to the player using Windows Media Player 9.

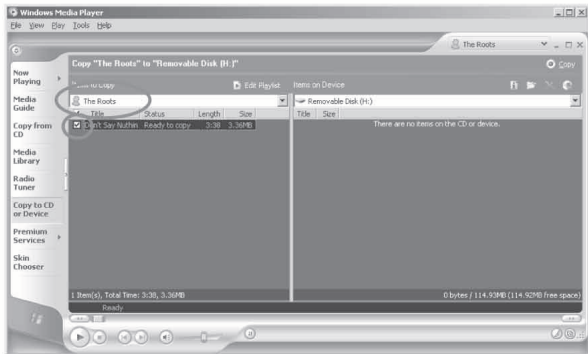
In order to download WMA files with DRM you must follow the procedure described below. If you do not have “Windows Media Player 9” on your computer, you must go to www.Microsoft.com to download and install this software. Before beginning the procedure please turn the unit ON and connect the USB cable to the unit and to the USB port of your computer.

1. Open the “Windows Media Player Browser” and click on “Copy to CD or Device”.



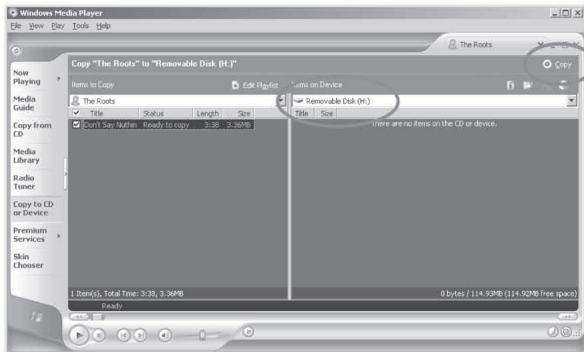
DOWNLOADING AND TRANSFERRING FILES (CONTINUED)

- Click on the “Items to Copy” pull-down menu to locate the music files you wish to download. Make sure to tick the box next to the files.



DOWNLOADING AND TRANSFERRING FILES (CONTINUED)

3. Select the Portable Device you want to copy to from the “Items on Device” drop down menu. Click “Copy” to start transferring the DRM files onto your unit.

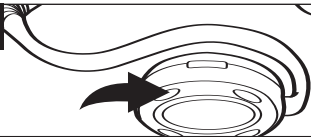


4. After you have downloaded all the desired files to your unit, follow the “Safely Remove Hardware” procedure described in the manual. See page 15.

OPERATION

TO LISTEN TO MP3s/WMA's

1



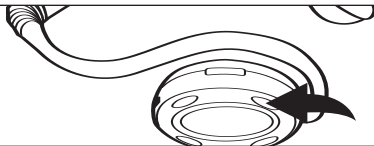
2



Place the headphones on your head. Turn the unit on by pressing the Play/Pause/Power On button; the Function indicator will light green. Press the Play/Pause/Power On button again; playback will start and the Function indicator will blink green rapidly.

Press the VOLUME +/- buttons to increase or decrease the volume.

3



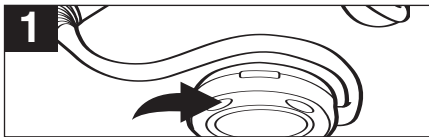
To stop playback, press the Stop/Power Off button, the Function indicator will light green. To turn the unit off, press and hold the Stop/Power Off button until the Function indicator turns off.

NOTES:

- While in the Stop mode, if no button is pressed for 3 minutes, the unit will turn off automatically.
- See pages 7 through 21 for information on uploading MP3 and WMA files to this unit.

OPERATION (CONTINUED)

TO PAUSE PLAYBACK

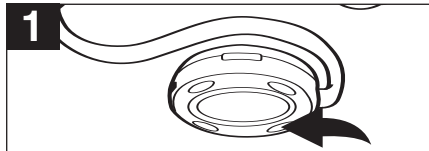


During playback, press the Play/Pause/Power On Button to pause playback; the Function indicator will blink green slowly.

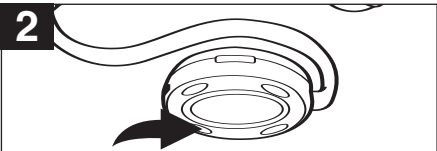


Press the Play/Pause/Power On Button again to resume playback; the sound will return and the Function indicator will blink green rapidly.

FORWARD/REVERSE SKIP



During playback, press the Skip/Search **▶▶** button to advance the player to the beginning of the next file. Press the Skip/Search **▶▶** button repeatedly to advance the player to higher-numbered files.

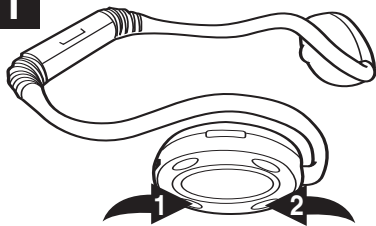


During playback, press the Skip/Search **◀◀** button to move the player back to the beginning of the currently playing file. Press the Skip/Search **◀◀** button repeatedly to move the player back to lower-numbered files.

OPERATION (CONTINUED)

HIGH-SPEED MUSIC SEARCH

1



During playback, press and hold the Skip/Search **⏮ 1** or **⏭ 2** button to move the player forward or backward within a file to locate a specific musical passage. The player will move forward or backward at high speed as long as the Skip/Search **⏮ 1** or **⏭ 2** button is held, and the Function indicator will flash green slowly. When you release the Skip/Search **⏮ 1** or **⏭ 2** button, normal playback will resume.

FUNCTION INDICATOR STATUS

Power On (Stop Mode)	Solid Green
Play.....	Rapid Blinking Green
Pause/High-Speed Music Search	Slow Blinking Green
Power Off/No Battery	Off
USB Connecting	Solid Red
File Transferring	Blinking Red

TROUBLESHOOTING GUIDE

If you experience a problem with this unit, check the chart below before calling for service.

SYMPTOM	CAUSE	SOLUTION
Unit will not turn on.	Dead battery, or not installed properly.	Replace battery and install properly.
No sound.	Volume is set too low.	Raise the volume.
	The MP3 or WMA files are corrupted.	Download uncorrupted files.
Unit will not turn off.	Stop/Power Off button is not held.	Press and hold Stop/Power Off button or, while in Stop mode, wait 3 minutes and unit will automatically turn off.
Download Failure.	Damaged USB cable.	Replace cable.
The computer is not recognizing the player.	The player must be turned on.	Turn the player on.
	The USB cable is not securely connected.	Make sure USB cable is securely connected.
	Driver is not installed or computer is not compatible.	Install driver and/or see pages 7 through 21 for compatibility.
WMA files with DRM cannot playback.	Incorrect downloading methods.	See pages 19 through 21 to download WMA files with DRM.

SPECIFICATIONS

Audio	Frequency Range	20Hz – 20KHz
	Headphones Output	10mW, 32ohm (Max. Vol)
	S/N Ratio	50db (MP3)
File Support	MP3	MPEG 1/2/2.5 Layer 3
	WMA	Windows Media Audio (WMA file with DRM)
	Bit Rate	8kbps – 320kbps
General	Dimensions	6.3 x 1.9 x 5.1 inches
	Weight	60g (without battery)
	Battery	1 x AAA battery
	Language	English
	USB	USB 1.1
	Built-in Memory	128MB
	Max. Playtime	Approx. 10 hours (128kps, MP3)
	Supported OS	Win ME, 2000, XP and Mac OSX Win 98SE (Driver is required)
	Operating Temperature	23° F to 104° F (-5° C to 40° C)

Specifications are subject to change without notice.

**FOR FIRMWARE UPGRADE, PLEASE VISIT OUR WEBSITE AT
WWW.MEMOREXELECTRONICS.COM
TO CHECK IF THERE IS NEW FIRMWARE AVAILABLE.**

**FOR ADDITIONAL SET-UP OR OPERATING ASSISTANCE,
PLEASE VISIT OUR WEBSITE AT
WWW.MEMOREXELECTRONICS.COM
OR CONTACT CUSTOMER SERVICE AT (954) 660-7100.**

**PLEASE KEEP ALL PACKAGING MATERIAL FOR AT LEAST 90
DAYS IN CASE YOU NEED TO RETURN THIS PRODUCT TO YOUR
PLACE OF PURCHASE OR TO MEMOREX.**

**FOR PARTS AND ACCESSORIES, CONTACT FOX INTERNATIONAL
AT 1-800-321-6993.**

Memcorp, Inc.
Weston, FL
Printed in China

Visit our website at www.memorexelectronics.com